

PL-25A1 Hi-Speed USB Easy Transfer Cable

User's Guide Manual

(For Cable Manufacturer Reference Only – Not for End-User Distribution)

NOTE: Prolific only supplies the PL-25A1 controller chip, PCLinq3 drivers, and the PCLinq3 software to customers for designing and manufacturing their cable products. Prolific "DOES NOT" manufacture any consumer cable end-products and is not responsible for supporting end-users. PL-25A1 device drivers for Windows Vista and Windows XP (SP2) are provided by Microsoft using Windows Easy Transfer (WET) program.

Document Version 1.0 (09/05/2007)

Introduction

Thank you for purchasing the PL-25A1 Hi-Speed USB Easy Transfer Cable! This cable is a Hi-Speed USB-to-USB host data cable that allows easy and direct peer-to-peer data transfer connection between two PCs without having to access a network.

The Easy Transfer Cable is especially designed to work with the following programs:

❖ **Microsoft Windows Easy Transfer for Windows Vista/XP**

Windows Easy Transfer (WET) program allows you to easily migrate all your files and program settings from your Windows XP (or Vista) PC to another Windows Vista PC. Automatically copy your files, photos, music, emails, settings, and other files to your new Windows Vista based PC easily. For more information, go to this website:

<http://www.microsoft.com/windows/products/windowsvista/buyorupgrade/easytransfer.mspx>

❖ **Prolific PCLinq3 for Windows Vista/XP/2000/ME/98SE**

PCLinq3 is a user-friendly file manager program that allows you to see and control file directories on both PCs at the same time. You can easily drag-and-drop or cut-and-paste files and folders between PCs as well as creating new folders and changing file attributes. PCLinq3 is designed to be used in addition to Windows Easy Transfer for Windows Vista and XP. PCLinq3 can also work separately under Windows 2000, ME, and 98SE.

❖ **Microsoft Windows Easy Transfer Companion for Windows Vista/XP**

Windows Easy Transfer Companion (WETC) is a program that helps you to transfer your most important software programs already installed in your Windows XP PC to your new Windows Vista PC. This way you can become productive on your new Vista PC as soon as possible. Windows Easy Transfer Companion is designed to be used in addition to Windows Easy Transfer—which transfers your data and settings. For more information about this program, go to this website:

<http://www.microsoft.com/windows/products/windowsvista/buyorupgrade/easytransfer.mspx>

Features & Specifications

- Transfer Files, Settings, and Programs between 2 PCs via USB port
- Suitable for Mobile PC and SOHO environment
- Dual data buffer supports two-way data transfer (using PCLinq3)
- Hi-Speed Performance with data transfer rate of over 20Mbytes/sec
- Full Compliance with the Universal Serial Bus Specification v1.1 and v2.0
- Bus Powered from either USB port – no separate power required
- Works with Microsoft Windows Easy Transfer (WET) program, Microsoft Windows Easy Transfer Companion (WETC) program, and Prolific PCLinq3 software.

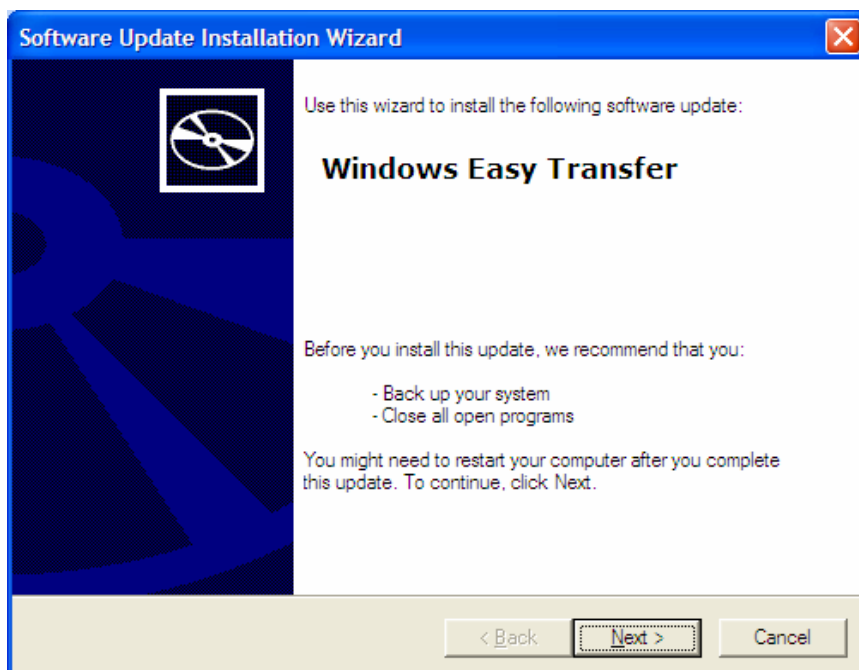
System Requirements

- **For Microsoft Windows Easy Transfer (WET) program:**
 - One source computer running Microsoft Windows Vista or Windows XP with Service Pack 2 (SP2), and one target computer running Windows Vista.
 - Must log on as Administrator
- **For Prolific PCLInq3 software:**
 - Two computers running either Microsoft Windows Vista, Windows XP with Service Pack 2 (SP2), Windows 2000, Windows ME, or Windows 98SE.
- **For Microsoft Windows Easy Transfer Companion (WETC) program:**
 - One source computer running Microsoft Windows XP with Service Pack 2 (SP2), and one target computer running Windows Vista.
 - Must log on as Administrator
 - Supports Windows English Version Only
- **Other PC requirements:**
 - DVD or CDROM drive for installing program CD
 - At least 200MB of hard disk space must be available
 - One standard USB 1.1 or USB 2.0 (recommended) port for each PC

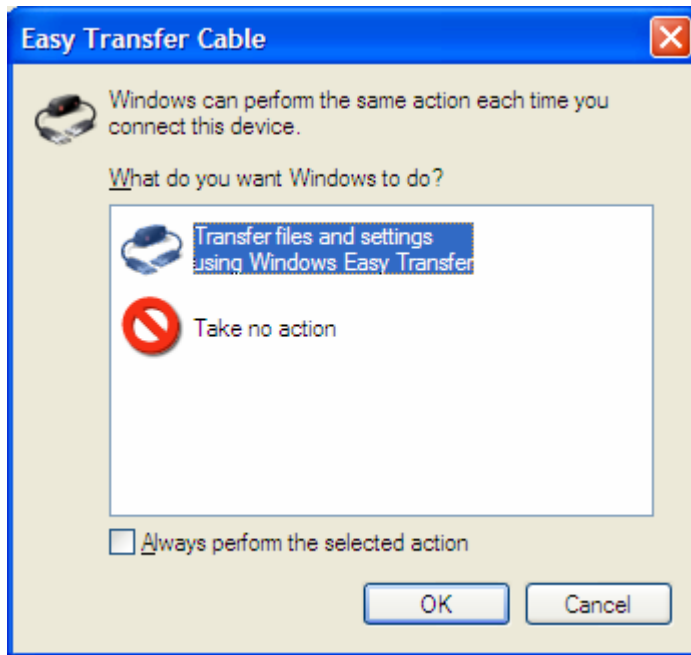
Installing the Windows Easy Transfer (WET) Program

Microsoft Windows Easy Transfer (WET) program is already built inside Windows Vista so you only need to install the program for Windows XP with Service Pack 2 (SP2).

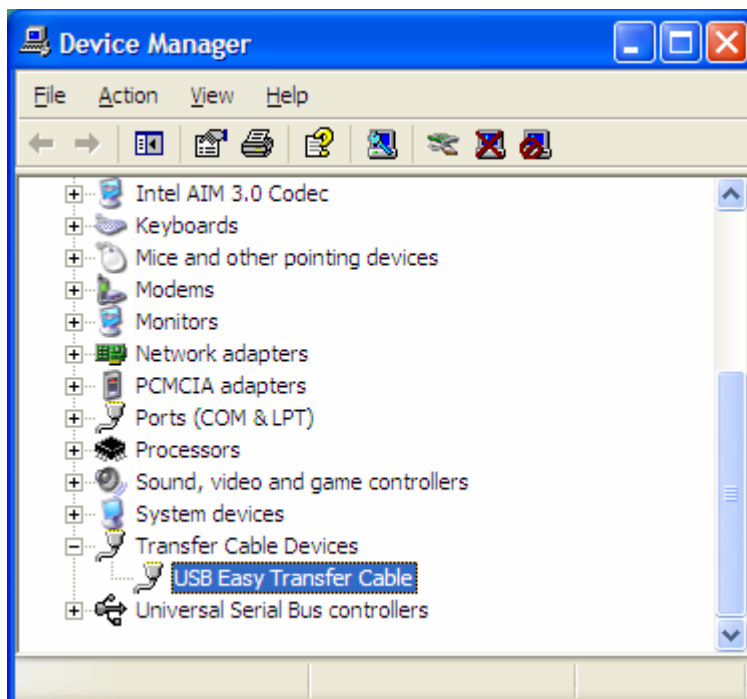
1. Insert the Windows Easy Transfer (WET) Installer CD into your Windows XP PC drive to launch the installation wizard and help you install the program. Do the same installation process for the other PC that you will link together.



2. After installation is complete, you can now plug-in the USB Easy Transfer Cable to the USB port. The Easy Transfer Cable auto play window will pop out for you to run instantly. You can click OK to launch Windows Easy Transfer program.



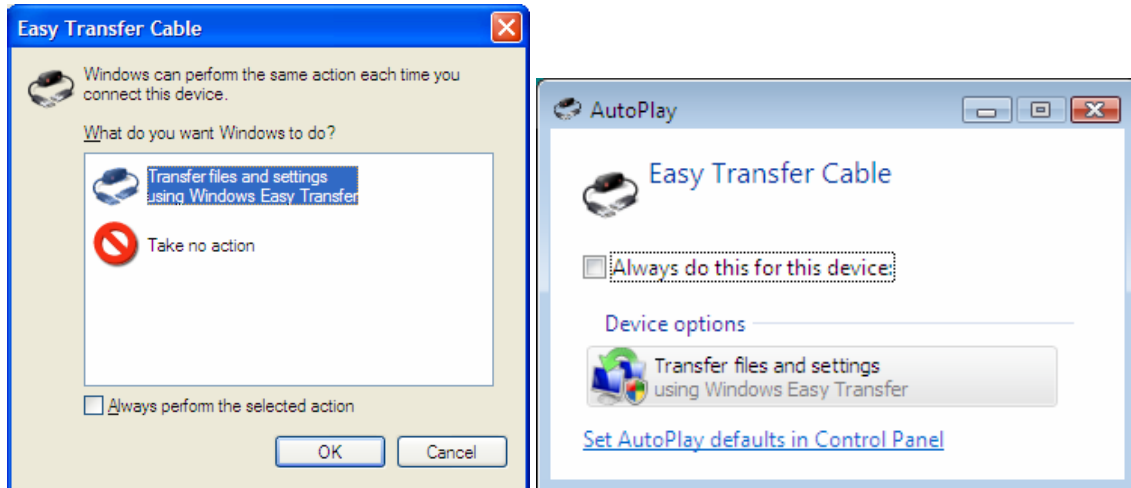
3. You can also go to the Control Panel–System–Device Manager to view the device properties. You should see "USB Easy Transfer Cable" device under the Transfer Cable Devices.



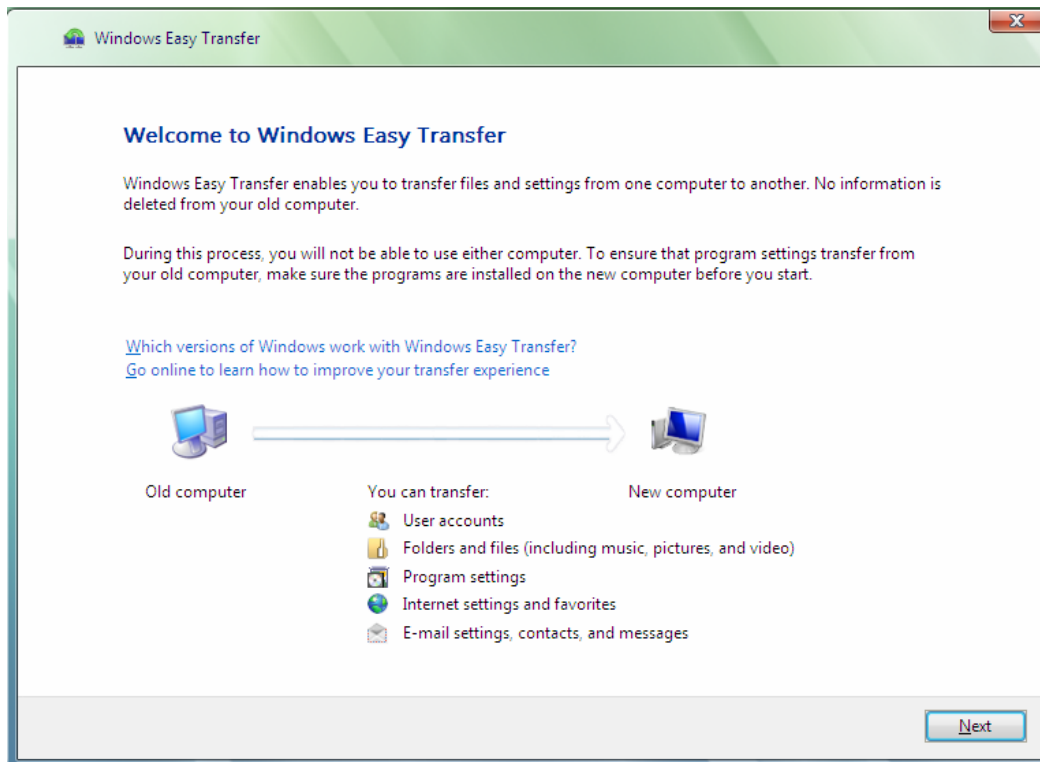
Running the Windows Easy Transfer (WET) Program

These are following steps for running the Windows Easy Transfer (WET) program:

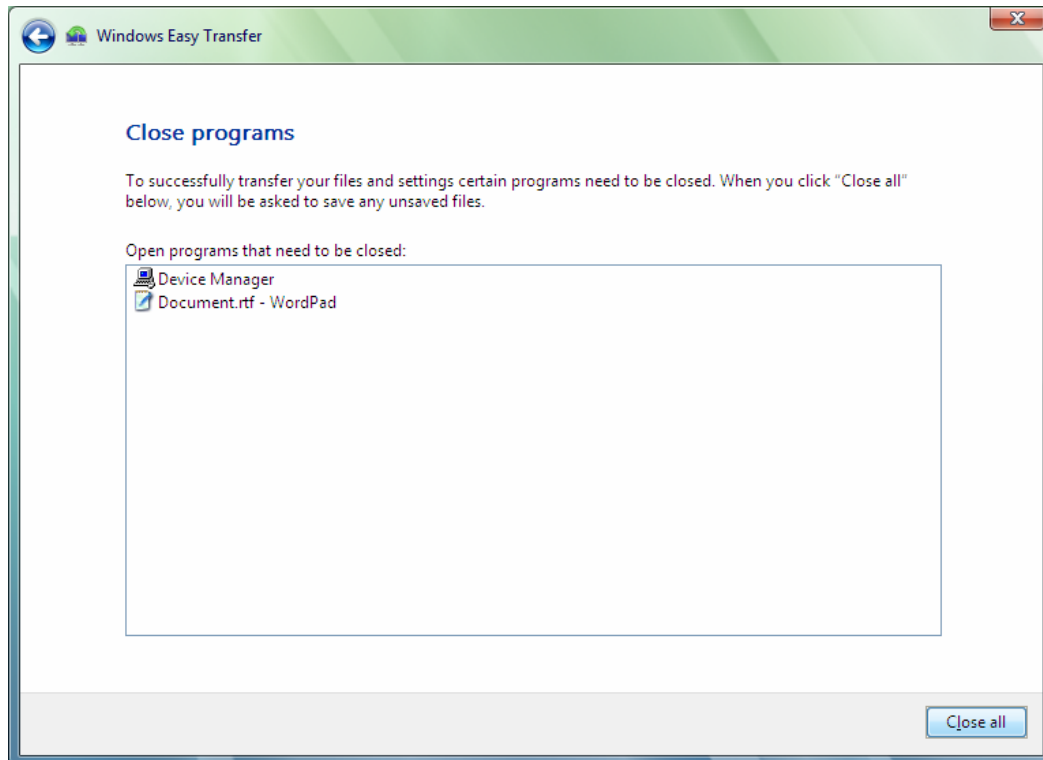
1. Plug-in the Easy Transfer cable into the USB port of both PC. The Easy Transfer auto play window will pop out for you to run instantly. Click "Transfer files and settings using Windows Easy Transfer". The program window for Windows Vista looks slightly different.



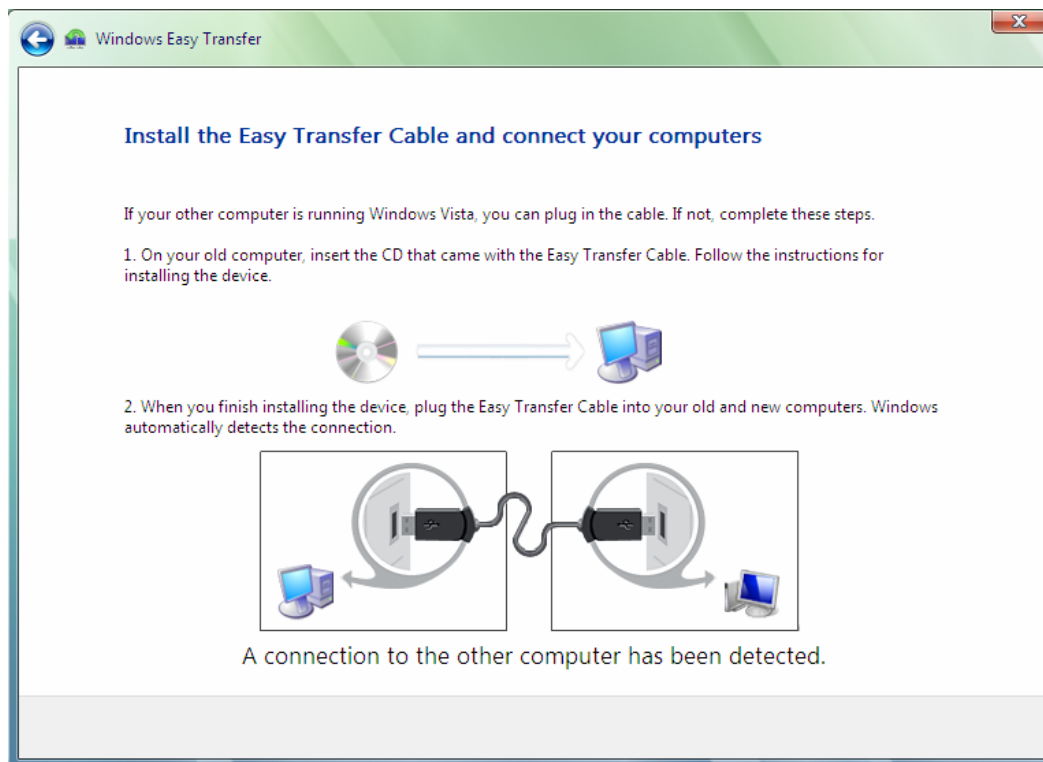
2. The Windows Easy Transfer program window will appear to guide you in transferring your files from your old computer to your new computer. Click Next button to continue. Do the same for other computer.



3. If there are any other programs that are running, Windows Easy Transfer program will require you to close those programs first. Click "Close All" to continue. Do the same for the other computer.



4. Windows Easy Transfer will then try to detect a connection to the other computer. If a connection is not detected, try to unplug and re-plug the cable on the other computer and repeat the above process.



5. After a connection has been detected, Windows Easy Transfer running on your old computer (Windows XP) will ask you to choose from three options what you want to transfer to your new computer. The Advanced options allow you to customize your selections on what to transfer. If you are running two Windows Vista computers, you will first need to choose which computer is the old computer and which is the new computer.



Which computer are you using now?



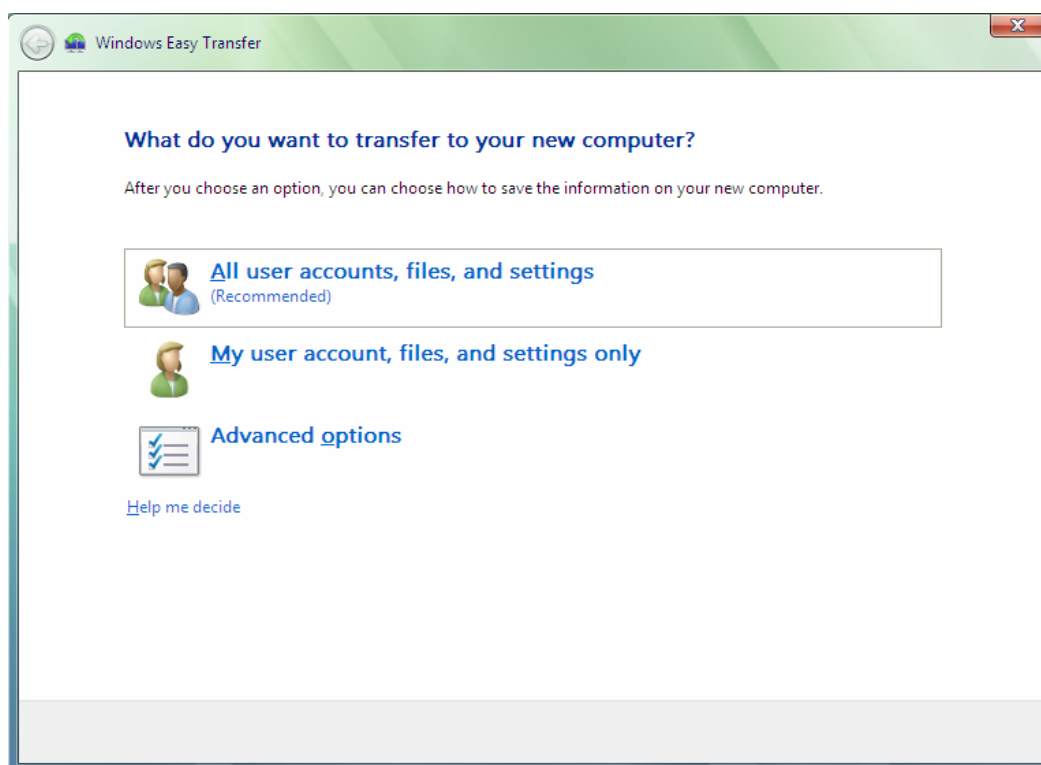
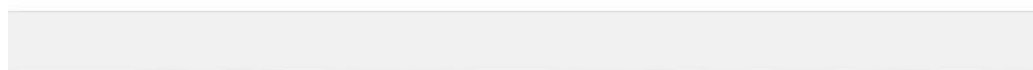
This is my new computer

I want to transfer items to this computer.

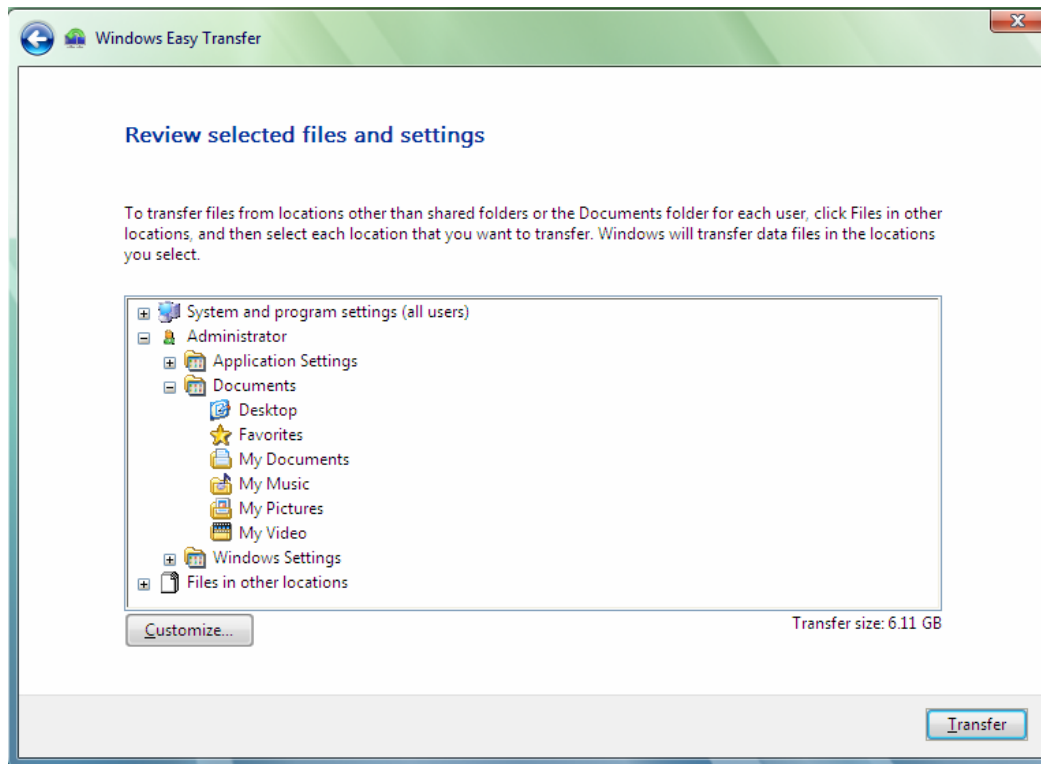


This is my old computer

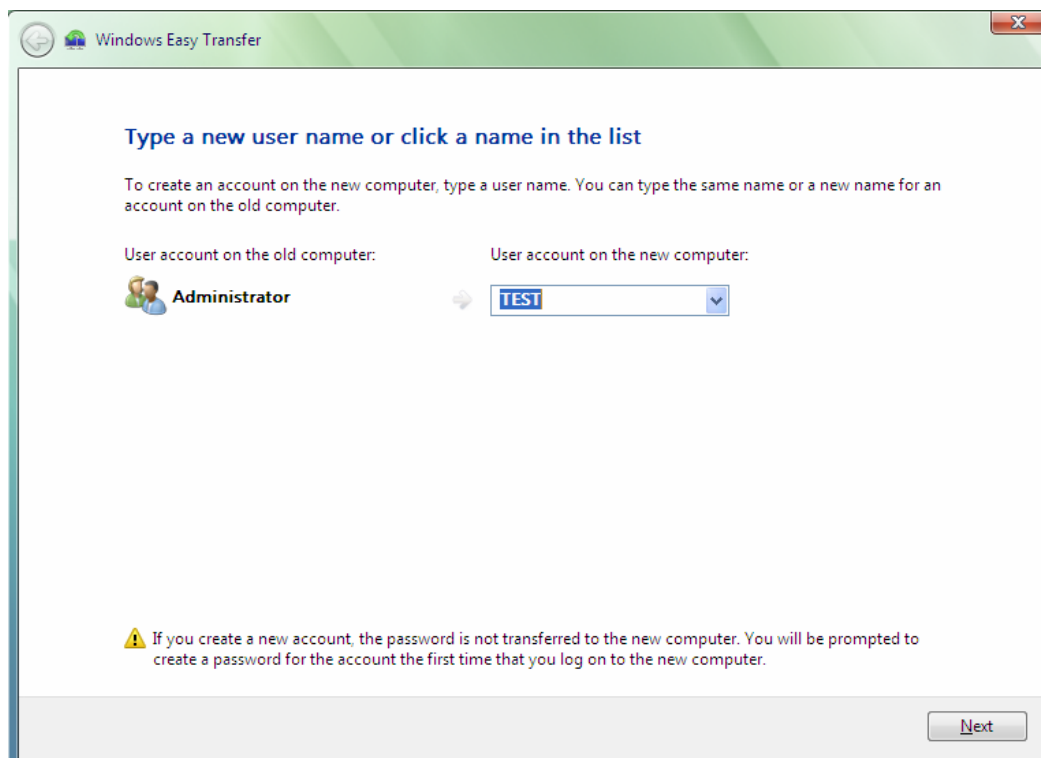
I want to transfer items from this computer.



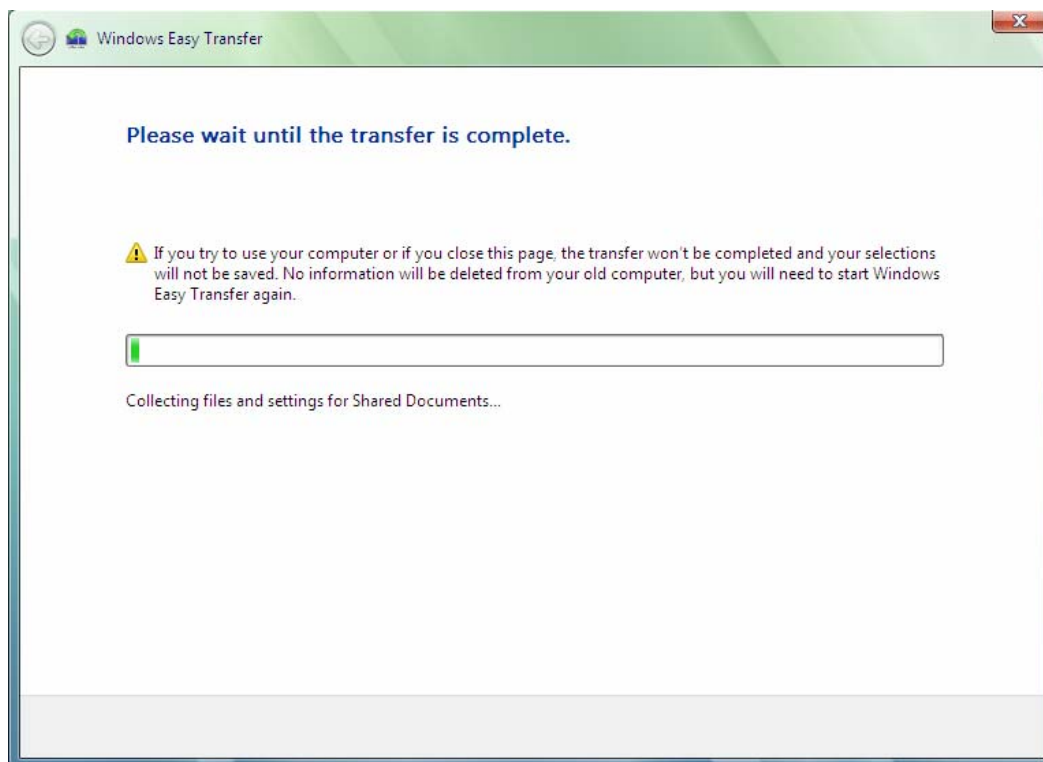
6. To transfer files other than the shared folders or the Documents folder from your old computer to your new computer, click Files in other locations, and then select each location that you want to transfer. Once you have finished selecting what to transfer, click the Transfer button.



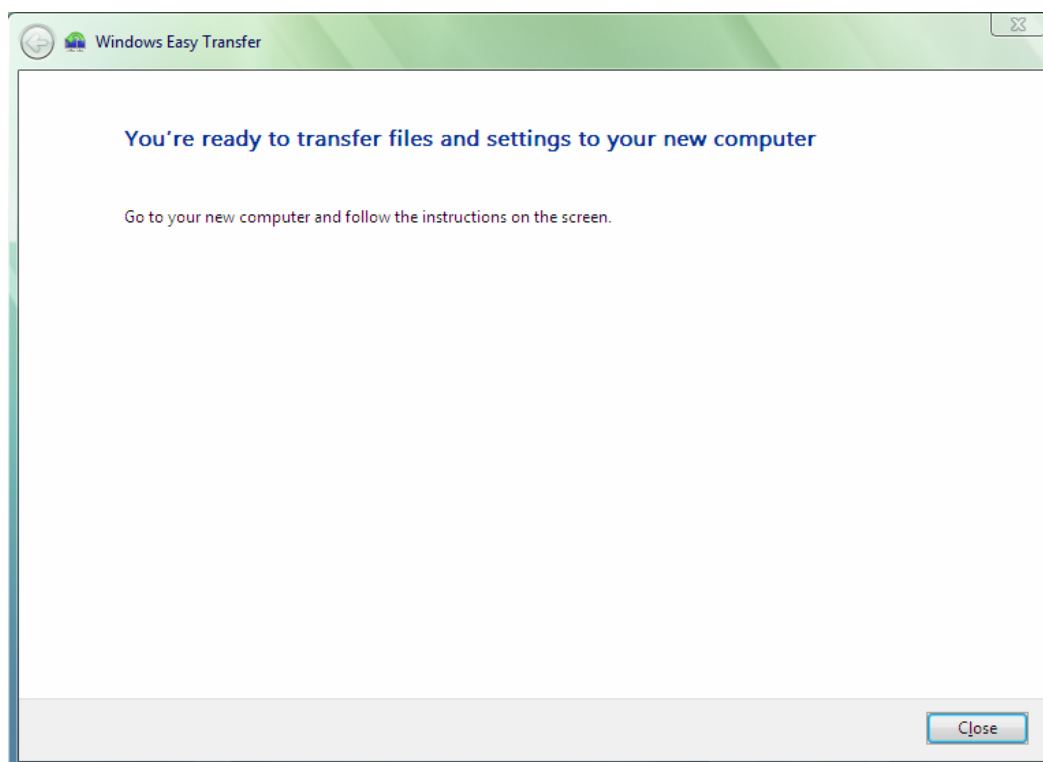
7. Windows Easy Transfer will then ask you what user account to use on the new computer where the transfer will be made. You can choose to transfer to existing account on your new computer or create a new account. Click Next to continue.



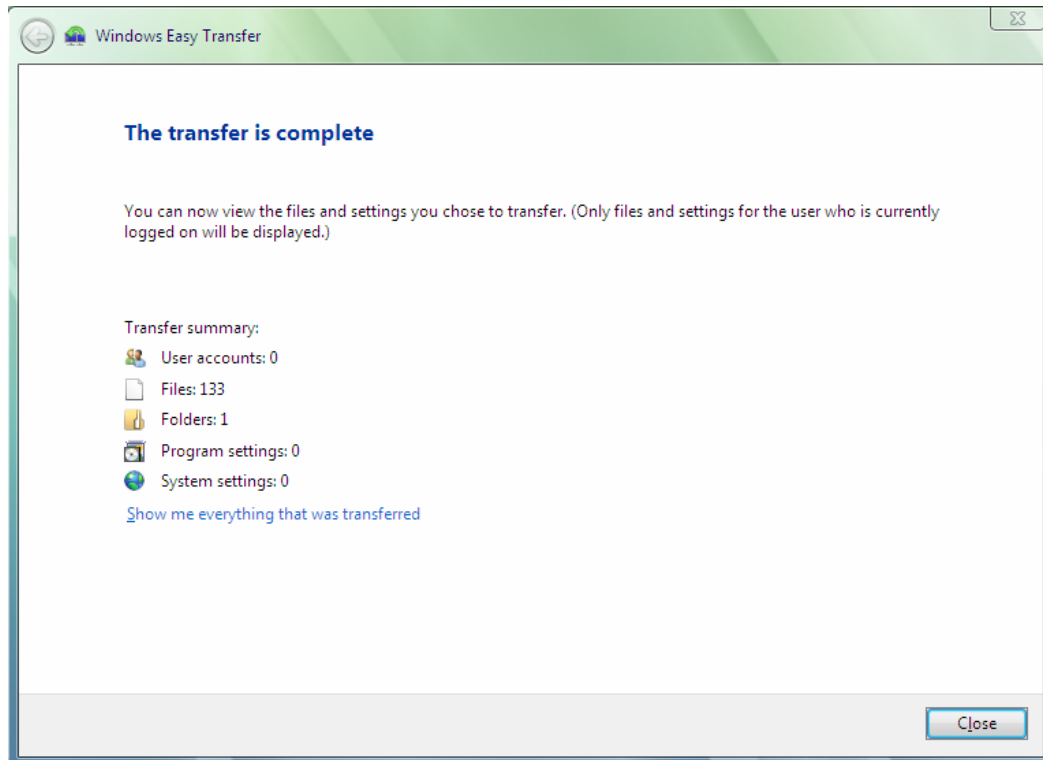
8. Windows Easy Transfer will then start the transfer to your new computer. Please wait until the transfer is complete.



9. Once your old computer finishes transferring the files and settings to your new computer, you need to go to your new computer to check the transfer if completed.



10. Once all files and settings have transferred to your new computer, Windows Easy Transfer will prompt you that the transfer is complete. You can now view the files and settings you chose to transfer. Click on the Close button to exit.



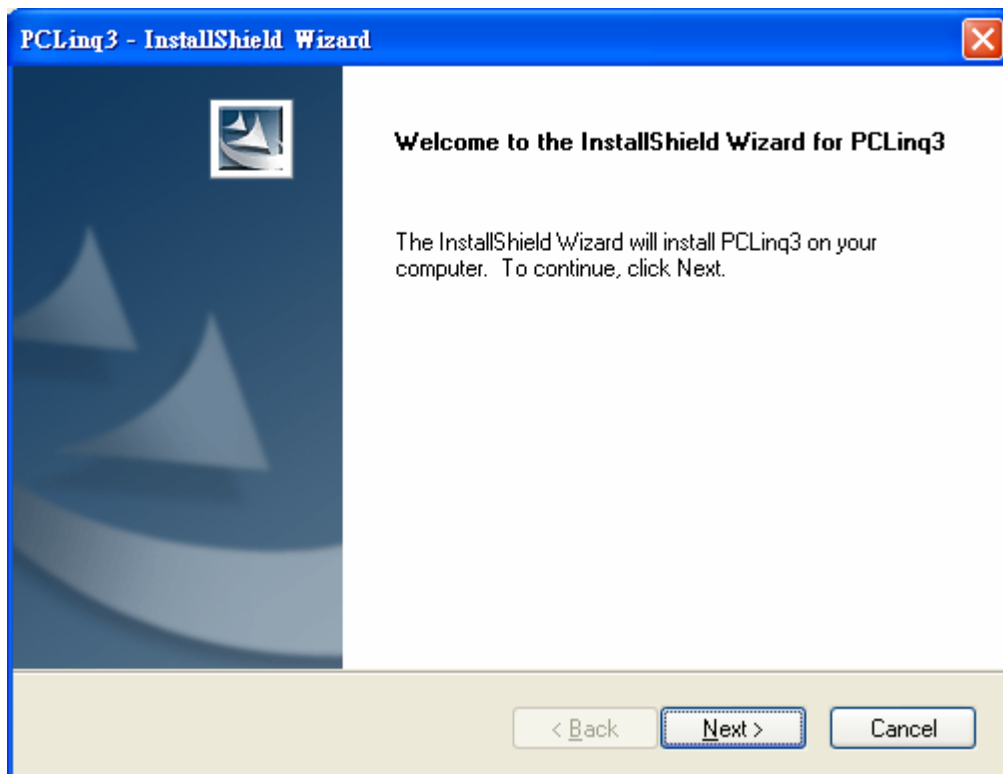
You may also download and try Microsoft Windows Easy Transfer Companion (WETC) program that helps you to transfer your most important software programs already installed in your Windows XP PC to your new Windows Vista PC. For more information about this program, go to this website:

<http://www.microsoft.com/windows/products/windowsvista/buyorupgrade/easytransfer.mspx>

Installing the PCLinq3 Setup Program

The following steps will guide you how to install the PCLinq3 software for Windows Vista, Windows XP, Windows 2000, Windows ME, and Windows 98SE. PCLinq3 is a user-friendly file manager program that allows you to see and control file directories on both PCs at the same time.

1. If you are running Windows Vista or Windows XP, you are required to install the Windows Easy Transfer program first. The Easy Transfer Cable uses the same device driver provided in Windows Easy Transfer program for Windows Vista and Windows XP. Refer to the previous sections about Windows Easy Transfer.
2. Load the PCLinq3 Installer CD and run the **SETUP.EXE** executable program file. The Setup program will then start to prepare the InstallShield Wizard that will guide you through the rest of the setup process.
3. The InstallShield Wizard welcome dialog box will then appear to display some information regarding the Setup program. Follow the instructions and click Next to continue and follow the succeeding instructions to complete the installation.

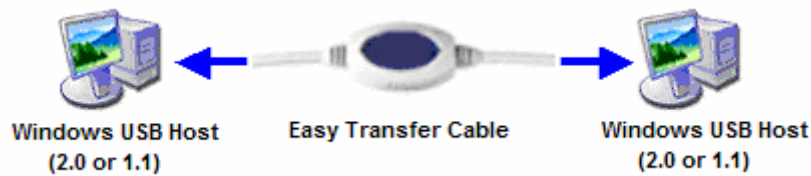


4. After installation is complete, click Start and Program Files and check if the Prolific PCLinq3 program folder was created. For Windows Vista, XP and 2000, there are two programs provided: ANSI mode and Unicode mode. For Windows 98 and ME, only the ANSI mode is provided.

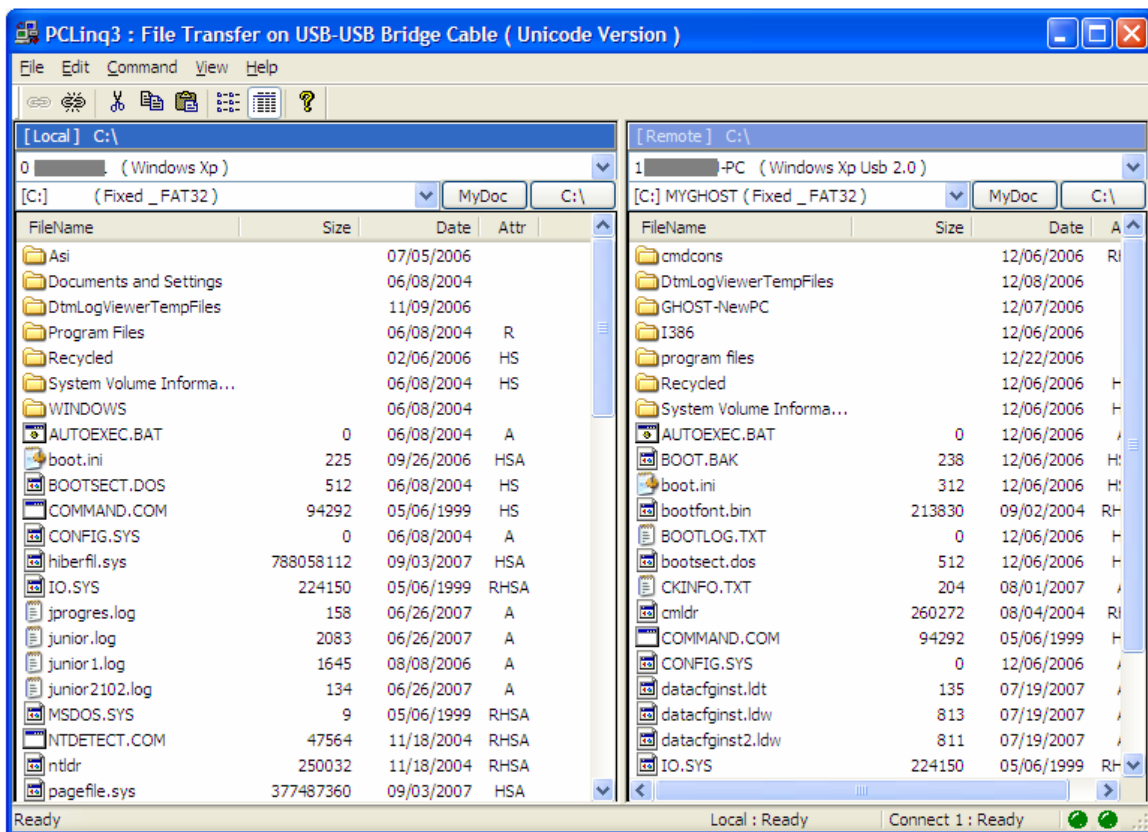


Running the PCLinq3 Program

The PCLinq3 program allows you to easily link two computers by plugging each end of the Easy Transfer cable into the USB port of both computers. Before you can start using the PCLinq3 program, you need first to run Setup program on both computers and install the bridge cable as mentioned in the previous section.



PCLinq3 is an application program used to control the file sharing and data transfer of the linked computers (also known as the local PC and the remote PC). After you have successfully completed the Setup programs and plug-in the Easy Transfer cable, you simply click and run the PCLinq3 program found in the PCLinq3 program folder. The PCLinq3 File Transfer program will appear as follows:



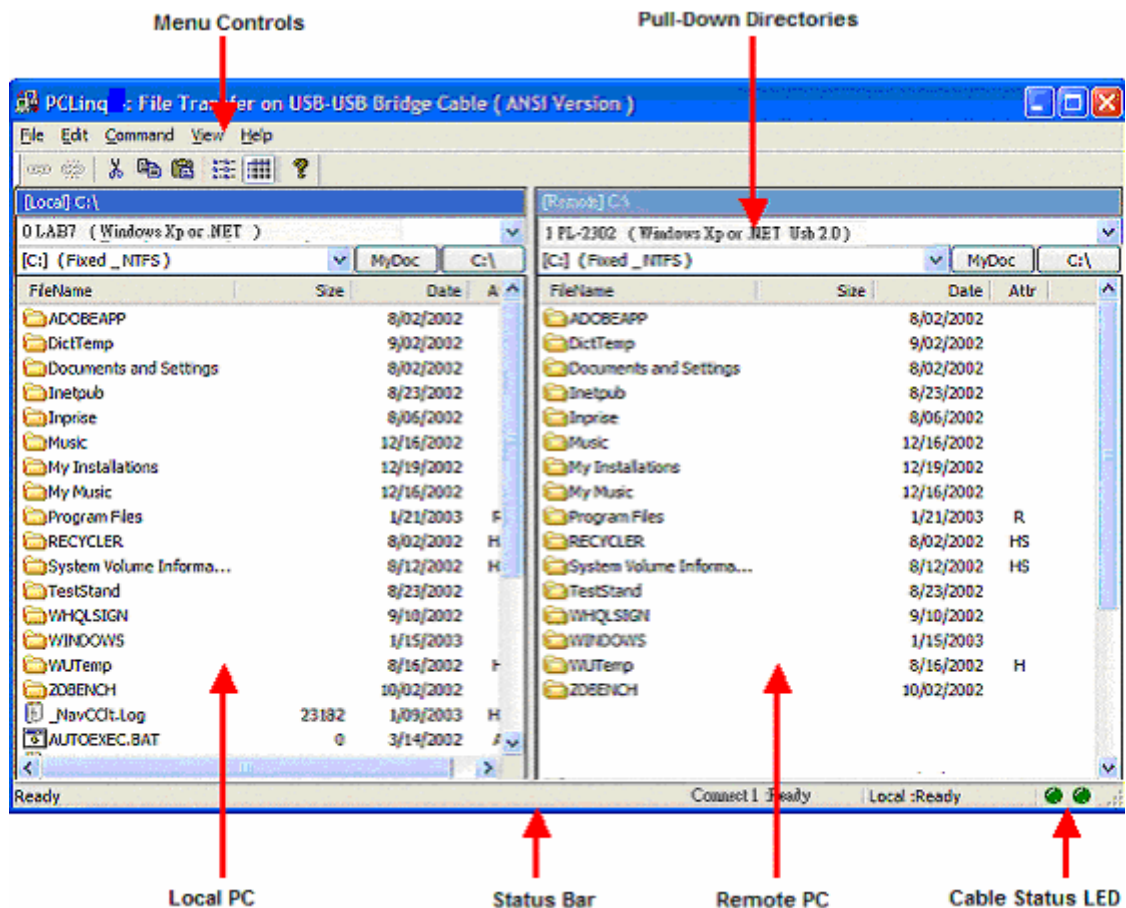
With PCLinq3, you can control both the local and remote PCs and do the following:

- (1) Display files/folders
- (2) Open files/folders
- (3) Create files/folders
- (4) Delete files/folders
- (5) Copy files/folders
- (6) Move files/folders
- (7) Change file/folder names

To start using PCLinq3:

1. Plug the one end of the Easy Transfer cable into the USB port of one computer and the other end into the USB port of the other computer. Note that after installing the program for the first-time under Windows XP, you are required to first plug-in the cable before you can open the PCLinq3 program.
2. Wait for Windows to detect the cable on each computer and check if it is properly installed.
3. Click Start-Programs-PCLinq3 to access the PCLinq3 programs. It is important that you use the same program mode for each computer. If you are using ANSI mode, then both computers should be running the ANSI mode program. Check the Status LED on the bottom right of the program dialog box if it is ready or not. A green LED signifies a ready status while a red LED means not ready or not found. Make sure that the program shows two green LEDs to indicate a linked connection.

***Note:** The Unicode program is only supported in Windows Vista, Windows XP, and Windows 2000. The ANSI program is available for all Windows OS versions. Use the PCLinq3 Unicode version if both PCs have Windows 2000 or above versions.*

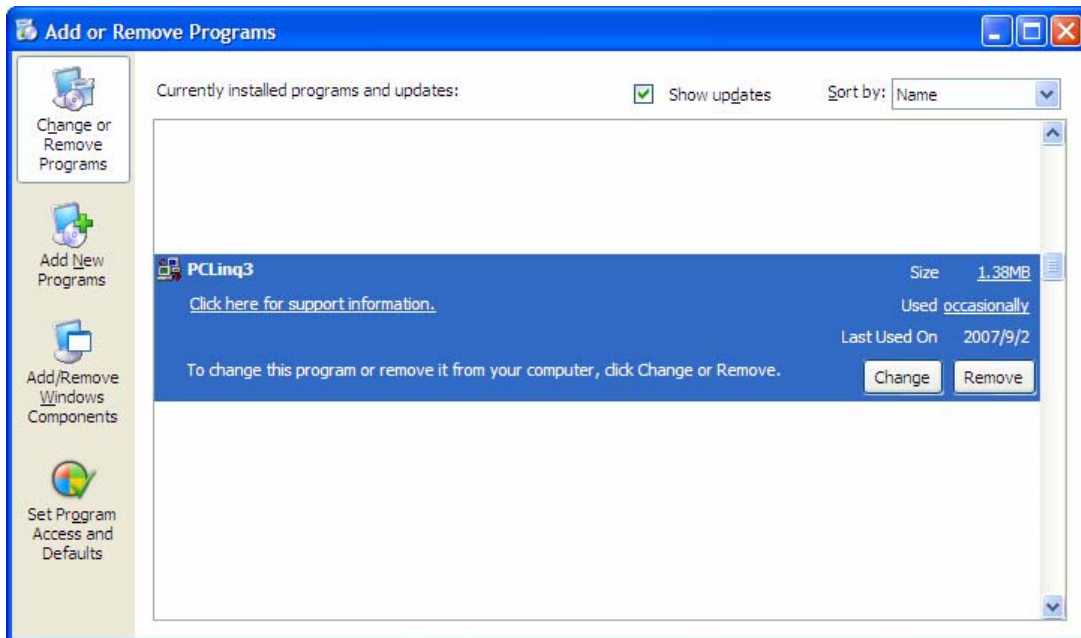


4. Once a connection has been established, you simply drag-and-drop the files or folders you want to transfer to the other computer. You can change disk drives or directories by clicking on the pull-down directory menu. You can also use the Menu Controls (File, Edit, Command, View, Help) for other functions of the program. There is also the Icon Controls for common used commands.

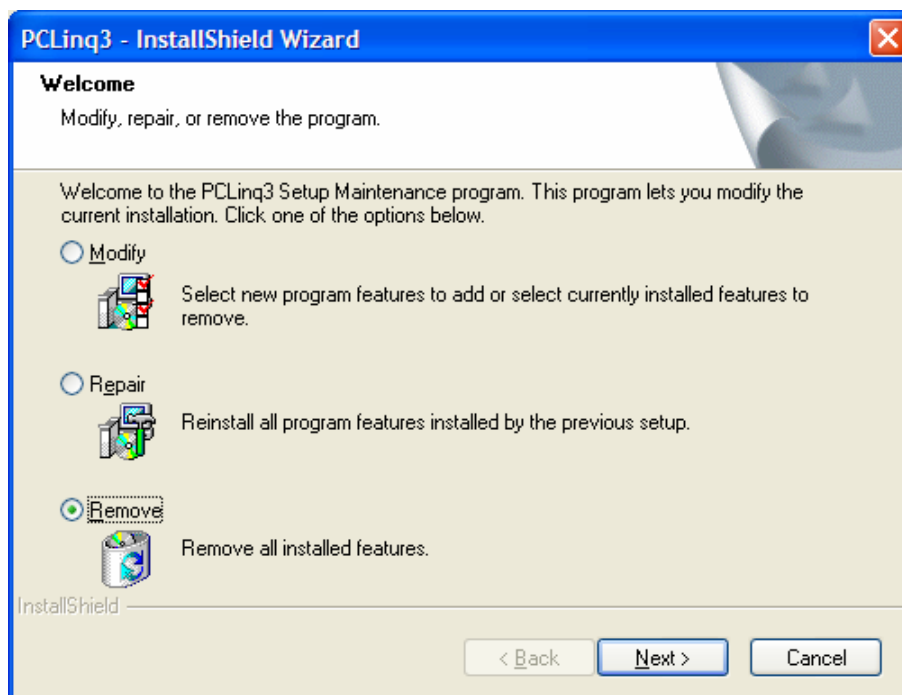
Uninstalling the PCLinq3 Bridge Cable

It is easy to uninstall the PCLinq3 program.

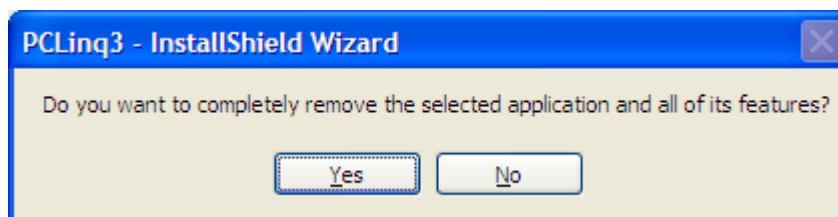
1. Make sure to first unplug the Easy Transfer cable and close the PCLinq3 program.
2. Go to Control Panel and double-click on Add or Remove Programs. Look for the PCLinq3 program and click Remove button.



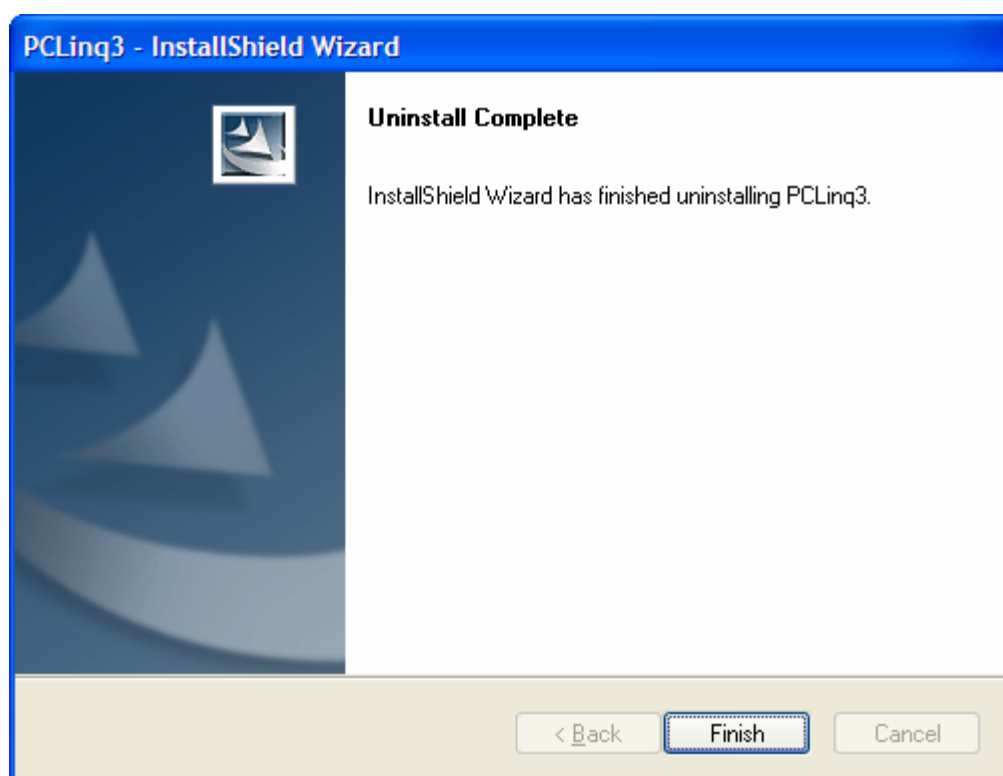
3. The PCLinq3 InstallShield Wizard program will appear and let you choose if you want to Modify, Repair or Remove installations. Click the Remove button selection to remove all installations. Make sure that you have unplugged the Easy Transfer cable and click Next to continue.



4. The PCLinq3 InstallShield Wizard program will confirm with you if you really want to completely remove the application and features. Click Yes to uninstall.



5. Wait for the InstallShield Wizard program to complete uninstallation. Click Finish when uninstall is complete.



Disclaimer

All the information in this document is subject to change without prior notice. The manufacturer does not make any representations or any warranties (implied or otherwise) regarding the accuracy and completeness of this document and shall in no event be liable for any loss of profit or any other commercial damage, including but not limited to special, incidental, consequential, or other damages.

No part of this document may be reproduced or transmitted in any form by any means without the express written permission of the manufacturer.

All brand names and product names used in this document are trademarks or registered trademarks of their respective holders.